

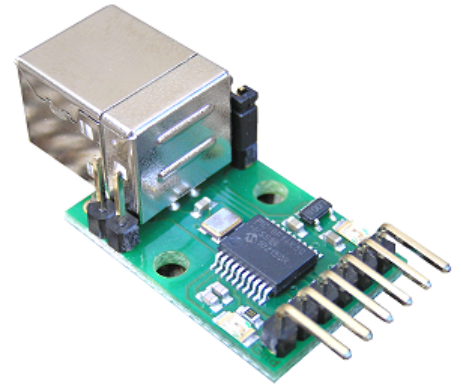
# USB-ISS Multifunction USB Communications Module

## Technical Specification

### Overview

The USB-ISS Multifunction USB Communications Module provides a complete interface between your PC and the I2C bus, SPI bus, a Serial port and general purpose Analogue Input or Digital I/O. The module is powered from the USB. Operating voltage is selectable between 3.3v and 5v. and can supply up to 80mA at 5v for external circuitry from a standard 100mA USB port.

	USB-I2C	USB-ISS	
USB Powered	✓	✓	
Support I2C at 100khz	✓	✓	
Support I2C at 20khz-1000khz	✗	✓	Fixed 20,50,100,400 &1000khz
I2C + I/O	✗	✓	
SPI Mode	✗	✓	24khz to 3Mhz
Serial Mode	✗	✓	300baud to 115200baud
I2C Direct	✗	✓	Used to build custom I2C sequences
Bootloader for user updates	✗	✓	Uses Microchip Bootloader
Supply power to external Circuit	✓	✓	Up to 80mA for USB-ISS
5v operation	✓	✓	
3.3v operation	✗	✓	
Mounting holes on PCB	✗	✓	



### Documentation

This documentation is divided up into 6 pages.

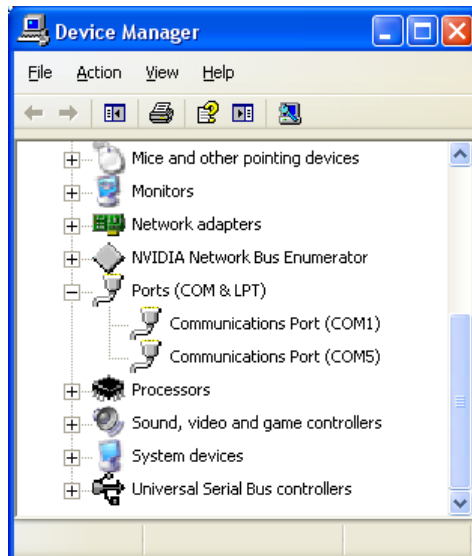
1. This page describes the connections to the USB-ISS, the USB driver installation and setting of the USB-ISS operating modes. Five further pages describe the operational commands and the Boot-Loader.
2. [I2C Operation](#), describes all the I2C commands available
3. [SPI Operation](#), describes the format for SPI communication
4. [Serial Operation](#), describes how to send and receive serial data.
5. [I/O Operation](#), describes how to set pins high/low and read digital or analogue inputs.
6. [Boot Loader](#), describes how to update the firmware in the USB-ISS.

### First Step - Get The Drivers

Before connecting the USB-ISS module, you should [download the driver](#) and unzip it to a temporary folder. Now connect the USB-ISS module and navigate windows to the temporary folder and install the driver. The USB-ISS will now appear as a COM port.

### Which COM port?

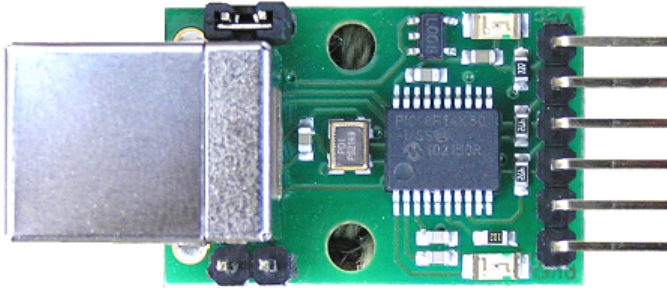
After installing the drivers, and plugging in the USB-ISS module to a spare USB port, you will want to know which COM port it has been assigned to. This will vary from system to system depending on how many COM ports you currently have installed. To find out where it is, right click on your "My Computer" desktop icon and select "Properties->Hardware->Device Manager". Now scroll down and open the "Ports (COM & LPT)" tab. You should see the USB serial port listed - COM5 in the example below. If you want to change the COM port number - just right click on it, select properties, select advanced and select the COM port number from the available list. The COM port default will probably be set up for 9600 baud, 8 data bits, no parity and one stop bits, but what ever it is just ignore it. These settings are not actually used because we have a full 12Mbits USB connection right into the heart of the processor.



## Connections

The diagram below shows the connections for the various modes.

Power Link - Remove for 3.3v operation.



I/O	SPI	Serial	I2C	I2C+Serial
3.3v / 5v	3.3v / 5v	3.3v / 5v	3.3v / 5v	3.3v / 5v
I/O4	SDI	I/O4	SDA	SDA
I/O3	SCK	I/O3	SCL	SCL
I/O2	SDO	Tx	I/O2	Tx
I/O1	/CE	Rx	I/O1	Rx
0v Ground	0v Ground	0v Ground	0v Ground	0v Ground

Bootloader Link - Fit link for Bootloader mode

### 3.3v or 5v

Add the link for 5v, remove it for 3.3v

The processor on the USB-ISS is equally happy running from 3.3v or from 5v. With the LEDs it takes up to 20mA so when 5v is selected by linking the power select pins, the USB-ISS module can supply up to 80mA to external devices. When the link is removed a 3.3v regulator supplies the power. This regulator is capable of 50mA, so when running at 3.3v up to 30mA is available to your circuits. If your application requires more than this, or has its own supply, then leave the 3.3v/5v pin unconnected. Do not apply your own voltage to this pin.

### LEDs

The Green Led is a power indication and is on all the time the module is connected to a powered USB port. The Red LED will flash whenever there is a valid I2C or SPI command received.

### I/O pins

Each I/O pin, 1 to 4, may be individually selected to be Analogue Input or Digital Input or Digital Output.

Inputs will not accept voltage higher than the supply, so **when operating at 3.3v the inputs are NOT 5v tolerant.**

Analogue inputs span from 0v to the supply for a range of 0-1023 (10-bit A/D conversion).

### SCL and SDA

These pins are the I2C bus connections. They should be connected directly to the SCL and SDA pins on your I2C device. The USB-ISS module is always a bus master, and is fitted with 4.7k pull-up resistors on the PCB. These resistors are automatically disconnected in other modes.

### SDI, SCK, SDO and CE

SDI is the SPI input to the USB-ISS, connect it to SDO on your device.

SDO is the SPI output from the USB-ISS, connect it to SDI on your device.

SCK is the SPI clock output from the USB-ISS, connect it to SCK on your device.

CE is the active low chip enable signal, connect it to CE on your device.

### Tx and Rx

These are logic level signals, not RS232. **Do not connect this to an RS232 port** without using a suitable RS232 logic level inverter chip.

### 0v Ground

The 0v Ground pin must be connected to the 0v (Ground) on your device.

### Setup Commands

The **USB-ISS** command (0x5A) is used for internal operations. There are three sub-commands:

Command	SubCommand	Description
USB-ISS (0x5A)	ISS_VERSION (0x01)	Returns 3 bytes, the module ID (7), firmware version (currently 2), and the current operating mode.
USB-ISS (0x5A)	ISS_MODE (0x02)	Sets operating mode, I2C/SPI/Serial etc. See next section for details
USB-ISS (0x5A)	GET_SER_NUM (0x03)	Returns the modules unique 8 byte USB serial number.

**ISS-VERSION** will return three bytes. The first is the Module ID, this will always be 7. The second byte is the firmware revision number. The third byte is the current operating mode, **ISS\_MODE**. This is initialized to 0x40 (I2C-S\_100KHZ) on power up.

Example:

Send 0x5A, 0x01.

Receive 0x07, 0x02, 0x40.

**GET\_SER\_NUM** will return the modules unique 8 byte USB serial number.

Example:

Send 0x5A, 0x03.

Receive 0x30, 0x30, 0x30, 0x30, 0x30, 0x30, 0x30, 0x31. (that's "00000001")

The received serial number will always be ASCII digits in the range "0" to "9" ( 0x30 to 0x39 ).

**ISS\_MODE** sets the operating mode. This sets up the modules I/O pins and hardware for the required mode. There are 4 operating modes (I2C, SPI, Serial and I/O) some which can be combined. I2C mode is further broken down into the various fixed frequencies and the use of software (bit bashed) or hardware I2C ports. The full list is:

Operating Mode	Value
IO_MODE	0x00
IO_CHANGE	0x10
I2C_S_20KHZ	0x20
I2C_S_50KHZ	0x30
I2C_S_100KHZ	0x40
I2C_S_400KHZ	0x50
I2C_H_100KHZ	0x60
I2C_H_400KHZ	0x70
I2C_H_1000KHZ	0x80
SPI_MODE	0x90
SERIAL	0x01

I/O\_CHANGE is not really an operating mode. It's used to change the I/O mode between Analogue Input, Digital Input and digital Output without changing Serial or I2C settings.

The I2C modes will have I/O on the I/O1 and I/O2 pins.

Serial mode will have I/O on the I/O3 and I/O4 pins.

I2C and Serial can be combined, for example I2C\_S\_100KHZ (0x40) + SERIAL (0x01) = 0x41.

SPI requires all four I/O pins so there are no other options for this mode.

### IO\_MODE

I/O mode requires one further **IO\_TYPE** byte to set the I/O type for each pin.

The **IO\_TYPE** byte is made up from 4 pairs of bits, 1 pair for each I/O pin - 4B,4A, 3B,3A, 2B,2A, 1B,1A

where each pair  
is: xB xA

- 0 0 Output Low
- 0 1 Output High
- 1 0 Digital Input
- 1 1 Analogue Input

For example 0x01 (binary 00000001) would set I/O1 to output high and I/O's 2-4 to output low.

0xB4 (binary 10110100) would set I/O4 to digital input, I/O3 to analogue input, I/O2 to output high and I/O1 to output low.

The four byte command to set I/O mode is:

ISS_CMD	ISS_MODE	IO_MODE	IO_TYPE (see example above)
0x5A	0x02	0x00	0xB4

I/O mode may be combined with SERIAL mode.

When combined with SERIAL, I/O1 is the Rx pin and I/O2 is the Tx pin. Only I/O3 and I/O are available as I/O pins.

This is a 6 byte setup command.

ISS_CMD	ISS_MODE	IO_MODE+SERIAL	Baud rate divisor (high byte)	Baud rate divisor (low byte)	IO_TYPE (see example above)
0x5A	0x02	0x01	0x00	0x9B	0xB0

In all mode setting commands, two bytes are returned. See [Response Bytes](#) below.

The formula for calculating the baud rate is:

$$x = (48000000 / (16 + \text{baud rate})) - 1$$

For example if the required baud rate is 19200

$$(48000000 / (16 * 19200)) - 1 = 155.25 \text{ so we will use } 155.$$

155 is 0x009B so we set the high byte to 0x00 and the low byte to 0x9B.

Here are some standard baud rates:

Baud Rate	Divisor	High Byte	Low Byte
300	9999	0x27	0x0F
1200	2499	0x09	0xC3
2400	1249	0x04	0xE1
9600	311	0x01	0x37

19.2k	155	0x00	0x9B
38.4k	77	0x00	0x4D
57.6k	51	0x00	0x33
115.2k	25	0x00	0x19

The serial mode is compatible with both 1 and 2 stop bit formats because it transmits 2 stop bits and only needs to receive 1. There is no parity.

### IO\_CHANGE

Not really an operating mode. It's used to change the I/O mode between Analogue Input, Digital Input and digital Output without changing Serial or I2C settings. It only needs to be used when you are using Serial or I2C modes and you want to change the I/O pins. The format is:

ISS_CMD	ISS_MODE	IO_MODE	IO_TYPE (see example above)
0x5A	0x02	0x10	0xB4

In all mode setting commands, two bytes are returned. See [Response Bytes](#) below.

### I2C Modes

There are 7 I2C commands as detailed above. They differ only in the SCL frequency and whether they use a software bit bashed driver or the I2C hardware in the PIC chip.

The I2C command on its own will have I/O on pins I/O1 and I/O2. This is a 4 byte setup command.

ISS_CMD	ISS_MODE	I2C_MODE	IO_TYPE (see I/O mode above)
0x5A	0x02	0x60	0x04

This example will initialize I2C to 100khz using the hardware I2C peripheral in the PIC chip.

The I2C commands may be combined with SERIAL mode.

When combined with SERIAL, I/O1 is the Rx pin and I/O2 is the Tx pin. This is a 5 byte setup command.

ISS_CMD	ISS_MODE	I2C_MODE+SERIAL	Baud rate divisor (high byte)	Baud rate divisor (low byte)
0x5A	0x02	0x71	0x00	0x9B

The formula for calculating the baud rate is the same as for I/O+Serial above.

In all mode setting commands two bytes are returned. See [Response Bytes](#) below.

### SPI Mode

This mode requires all four I/O pins, so cannot be combined with serial, I2C or I/O. Refer to the connection diagram above for pin-outs. SPI mode is capable of operating in all four possible clock phases. SPI\_MODE command (0x90) may be combined with the phase selection bits.

SPI_MODE	Phase
0x90	Tx on transition from active to Idle clock, Idle state for clock is low level
0x91	Tx on transition from active to Idle clock, Idle state for clock is high level
0x92	Tx on transition from Idle to active clock, Idle state for clock is low level
0x93	Tx on transition from Idle to active clock, Idle state for clock is high level

0x90 is the standard mode, use this with SPI SRAM, EEPROM's etc.

Setting SPI mode is a 4 byte command:

ISS_CMD	ISS_MODE	SPI_MODE	SCK divisor
0x5A	0x02	0x90	0x01

The SCK divisor sets the SPI clock speed. The formula is:

Divisor = (6000000/SCK)-1

For a 3Mhz SCK, divisor = (6000000/3000000)-1 = 1

For 500khz SCK, divisor = (6000000/500000)-1 = 11

The maximum divisor of 255 gives the slowest SCK of just 23.44khz.

A minimum of 0x01 should be set for the divisor, if you set 0x00 it will be the same as 0x01.

In all mode setting commands, two bytes are returned. See [Response Bytes](#) below.

### Response Bytes

The response to the mode setting frames is always two bytes.

The first byte is ACKnowledge (0xFF) or NotACKnowledge (0x00).

If you get an ACK then the second byte will be just 0x00.

If you get a NACK then the second byte will be the reason, as follows:

0x05 Unknown Command

0x06 Internal Error 1 }  
0x07 Internal Error 2 } you should never see these

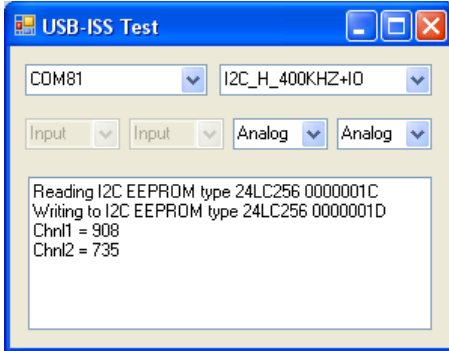
Under normal circumstances the response will be 0xFF, 0x00

### Further Technical Pages

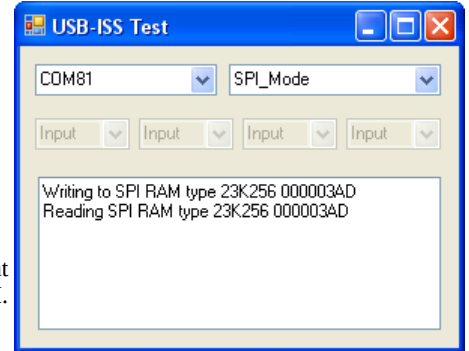
[I2C](#) [SPI](#) [Serial I/O](#) [Boot-Loader](#)

### Testing the USB-ISS

We have a small test program which will let you try out the different operating modes of the USB-ISS module. It is written in Visual C# 2010 version.



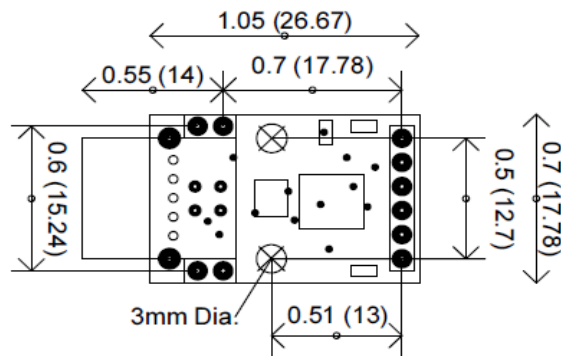
Left  
Image show test of Hardware I2C at 400khz with I/O.  
It is writing and reading a four byte (32 bit) integer.  
The I/O has been set to analogue and the measured values are displayed.



Right  
Here we are writing and reading to an SPI RAM.

You can download just the [executable files](#) or the [full source code](#).

### Dimensions



USB-ISS Mounting holes - Top View